

## OPTOOPCSERVER DATA SHEET

### Features

- > OPC-DA 2.0-compliant
- > Monitors, configures, and controls SNAP PAC controllers and brains as well as Opto 22 legacy devices
- > Provides fast, efficient handling of communications between multiple OPC clients and Opto 22 devices

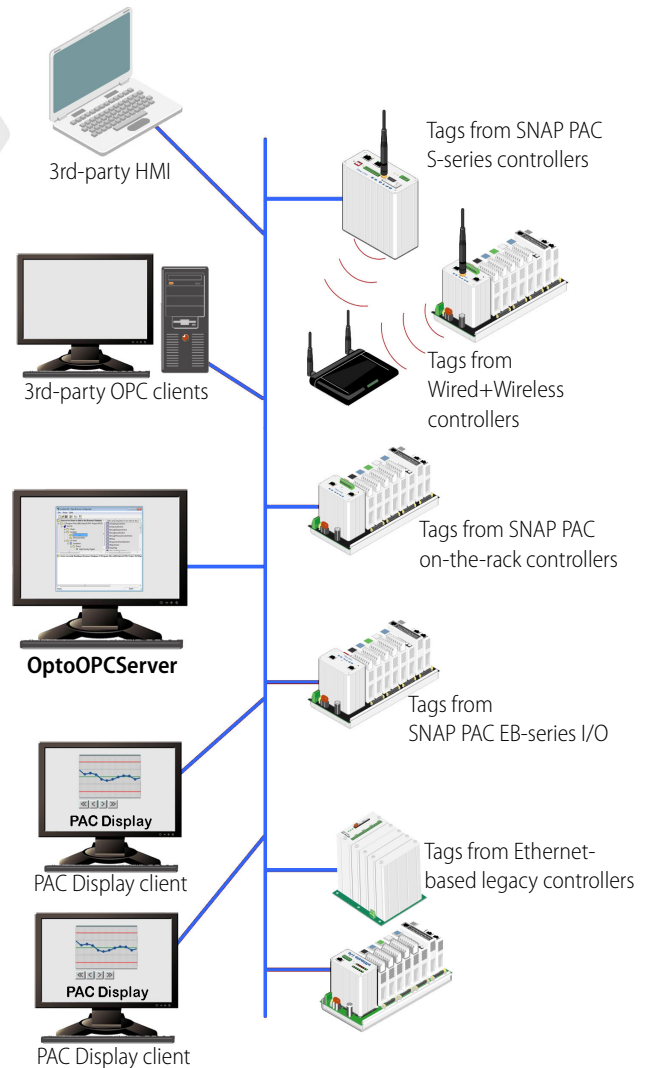
### DESCRIPTION

OptoOPCServer™, part of the PAC Project™ software suite, is an OPC-DA 2.0-compliant server that connects your OPC client software with Opto 22's *groov* EPIC and SNAP PAC systems, and legacy controllers and I/O units. Through OptoOPCServer, your HMI and SCADA applications can monitor, configure, and control these Opto 22 systems:

- *groov* EPIC processors
- SNAP PAC S-series standalone controllers
- SNAP PAC R-series on-the-rack controllers
- SNAP PAC EB-series brains\*
- SNAP PAC SB-series brains connected to SNAP PAC S-series controllers
- Ethernet-based legacy controllers and I/O units, such as the SNAP-LCE and SNAP Ultimate, SNAP Ethernet, and SNAP Simple I/O, as well as Ethernet-based FactoryFloor™ *mistic* controllers, such as the SNAP-LCM4, M4, M4RTU, and M4IO (M45ENET-100 Ethernet adapter card required).

OptoOPCServer is designed for fast, efficient handling of communications between multiple OPC clients and Opto 22 devices. Because OptoOPCServer uses a report-by-exception method of communicating with clients, network traffic on industrial automation and manufacturing networks is kept to a minimum. On the client side, OptoOPCServer consolidates tasks from multiple OPC clients, recognizing identical requests and avoiding duplication.

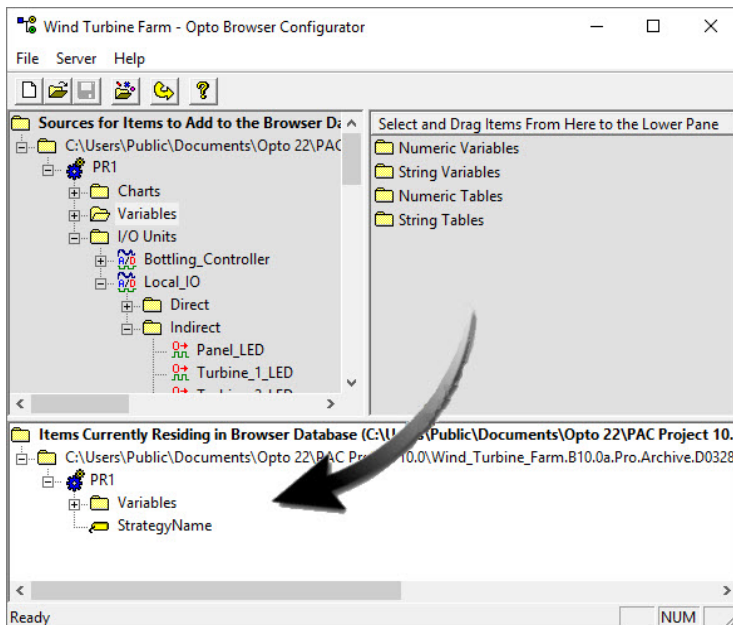
OptoOPCServer is strongly recommended for multiple seats of PAC Display™. It is the critical component for scaling up a PAC Display monitoring system for optimum performance.



System Architecture

### Part Numbers

Part	Description
OPTOOPCSERVER	OptoOPCServer software and documentation on CD, plus printed documentation



Opto Browser Configurator provides an intuitive drag-and-drop interface for building OPC browser databases from Opto 22 control and configuration files.

OptoOPCServer includes these software components:

- Opto Browser Configurator, an easy-to-use application that creates an OPC browser database from Opto 22 PAC Control strategies, ioControl and OptoControl strategies, and I/O unit configuration files
- OptoOPCServer, which runs on a workstation or dedicated network server
- OptoOPCServer debug monitor, for viewing the activity between OPC clients, OptoOPCServer, and Opto 22 devices.

- Ethernet capability
- VGA or higher resolution monitor. Minimum size: 800x600 with small fonts
- Mouse or other pointing device
- (Optional) Installed Windows printer
- If your PAC Display Pro project accesses an M4-series controller (such as a SNAP-LCM4 or M4RTU) via an Ethernet connection, controller firmware version R4.1a or newer is required. In addition, in order to access strings or string tables, controller firmware R4.1d or newer is required.
- At least 19 MB of available hard drive space.

## REQUIREMENTS

To use OptoOPCServer with your PC, you must have the following minimum configuration:

- A computer with a standard or mainstream processor and (at least) the minimum memory required for your version of Microsoft Windows. (Low-end CPUs are not recommended.) Additional memory may be required for some configurations.
- One of the following operating systems:
  - Microsoft® Windows® 10 Professional (32-bit or 64-bit)
  - (OptoOPCServer and OptoDataLink only) Windows Server® 2012 R2 and Windows Server 2008 R2

*NOTE: PAC Project cannot be installed on Windows XP or older Windows operating systems. Embedded operating systems are not tested or supported.*

## HOW TO OBTAIN OPTOOPCSERVER

Purchase OptoOPCServer either separately or as part of the complete PAC Project Professional software suite. You can [download OptoOPCServer](#) from our website at [www.opto22.com](http://www.opto22.com).

## PRODUCTS

Opto 22 develops and manufactures reliable, easy-to-use, open standards-based hardware and software products. Industrial automation, process control, building automation, industrial refrigeration, remote monitoring, data acquisition, and industrial internet of things (IIoT) applications worldwide all rely on Opto 22.

### groov EPIC® System

Opto 22's *groov Edge Programmable Industrial Controller (EPIC) system* gives you an industrially hardened system with guaranteed-for-life I/O, a flexible Linux®-based processor with gateway functions, and software for your automation and IIoT applications.

#### groov EPIC I/O

*groov I/O* connects locally to sensors and equipment with up to 24 channels on each I/O module. Modules have a spring-clamp terminal strip, integrated wireway, swing-away cover, and LEDs indicating module health and discrete channel status.

*groov I/O* is hot swappable, UL Hazardous Locations approved, and ATEX compliant.

#### groov EPIC Processor

The heart of the system is the *groov EPIC* processor. It handles a wide range of digital, analog, and serial functions for data collection, remote monitoring, process control, and discrete and hybrid manufacturing.

In addition, the EPIC provides secure data communications among physical assets, control systems, software applications, and online services, both on premises and in the cloud.

Configuring and troubleshooting I/O and networking is easier with the EPIC's integrated high-resolution color touchscreen. Authorized users can manage the system locally on the touchscreen or on a monitor connected via the HDMI or USB ports.

#### groov EPIC Software

Software included in the *groov EPIC* processor:

- PAC Control engine to run PAC Control and PAC Display
- CODESYS Runtime engine to run IEC61131-3 compliant programs built with CODESYS Development System
- Optional access to the Linux operating system through a secure shell (SSH) to download and run custom applications
- *groov View* for building your own device-independent HMI, viewable on the touchscreen, PCs, and mobile devices
- Node-RED for creating simple logic flows from pre-built nodes
- Ignition Edge® from Inductive Automation®, with OPC-UA drivers to Allen-Bradley®, Siemens®, and other control systems, and MQTT communications with Sparkplug for efficient IIoT data transfer

### groov RIO®

*groov RIO* revolutionizes remote I/O by offering a single, compact, PoE-powered industrial package with web-based configuration, commissioning, and flow logic software built in, plus support for multiple OT and IT protocols.

Standing alone, it meets the needs of small, variable I/O count applications, especially those that require data logging or data communications, commonly found in IIoT applications. *groov RIO* can also be used with a Modbus/TCP master or as remote I/O for a *groov EPIC* system.

### Older products

From solid state relays (our first products) to world-famous G4 and SNAP I/O, to SNAP PAC controllers, older Opto 22 products are still supported and still doing the job at thousands of installations worldwide. You can count on us to give you the reliability and service you expect, now and in the future.



## QUALITY

Founded in 1974, Opto 22 has established a worldwide reputation for high-quality products. All are made in the U.S.A. at our manufacturing facility in Temecula, California.

Because we test each product twice before it leaves our factory rather than testing a sample of each batch, we can afford to guarantee most solid-state relays and optically isolated I/O modules for life.

## FREE PRODUCT SUPPORT

Opto 22's California-based Product Support Group offers free, comprehensive technical support for Opto 22 products from engineers with decades of training and experience. Support is available in English and Spanish by phone or email, Monday–Friday, 7 a.m. to 5 p.m. PST.

Support is always available on our website, including [free online training](#) at OptoU, how-to [videos](#), [user's guides](#), the Opto 22 KnowledgeBase, troubleshooting tips, and [OptoForums](#). In addition, instructor-led, hands-on [Premium Factory Training](#) is available at our Temecula, California headquarters, and you can [register online](#).

## PURCHASING OPTO 22 PRODUCTS

Opto 22 products are sold directly and through a worldwide network of distributors, partners, and system integrators. For more information, contact Opto 22 headquarters at **800-321-6786** (toll-free in the U.S. and Canada) or **+1-951-695-3000**, or visit our website at [www.opto22.com](http://www.opto22.com).